

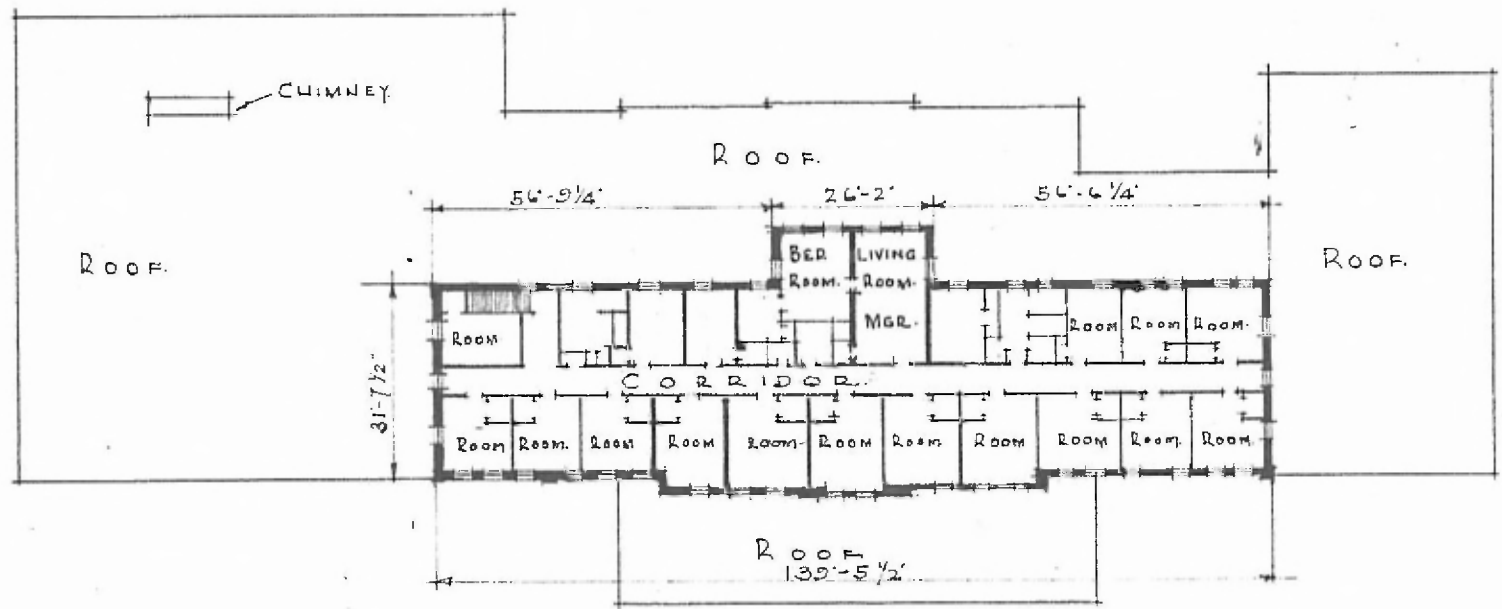
ERECTED . 1926  
 TYPE . BRICK STUCCO.  
 FOUNDATION . CONCRETE.  
 WALLS . 13" .  
 ROOF { TYPE  
 PITCH  
 HEATING . TILE & COMB .  
 APPROX. 1/4 .  
 STEAM:

FLOORS.  
 FINISH { OUTSIDE  
 INSIDE.  
 CEILING . HEIGHT.  
 LIGHTING.  
 SANITARY FACILITIES.

ASBESTOLITH; CEMENT; WOOD.  
 STUCCO .  
 PLASTER & BRICK.  
 WTG. RMS. 10'-6" DIN. ROOM 11'-3" FR. 12'-5"  
 ELECTRIC.  
 INSIDE TOILETS.

51.

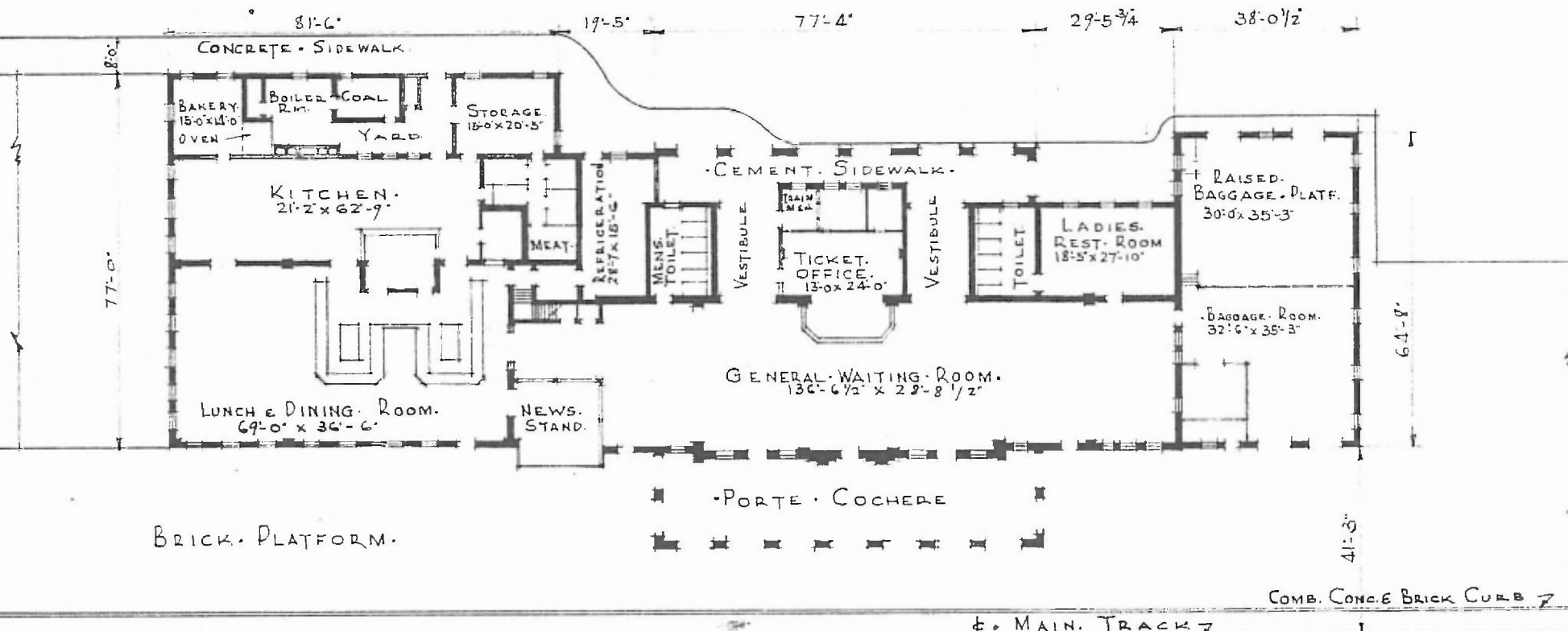
EASTERN DIV.  
 ROLLING 5073  
 STA. No. 239



SECOND FLOOR PLAN  
 SCALE 1/32" = 1'-0"

PASSENGER STATION  
 SPRINGFIELD MO.

SPRINGFIELD EASTERN DIV  
 ROLL-A-SUB  
 STA. N. 239 (50)



• FIRST FLOOR PLAN •  
 SCALE • 1/32" = 1'-0"

• PASSENGER STATION •  
 SPRINGFIELD • MO.

DATE FEB. 9. 1926.

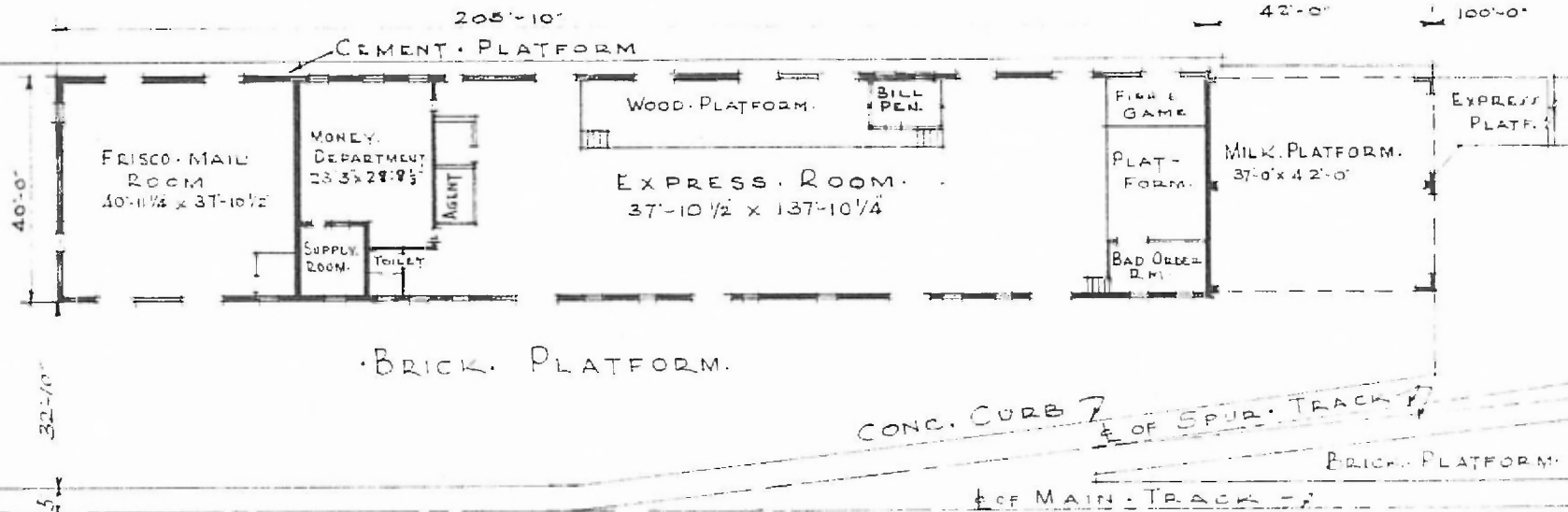
ERECTED. 1923.  
 TYPE. TILE · STUCCO  
 FOUNDATION. CONCRETE.  
 WALLS. 12' 2".  
 ROOF. { TYPE  
 { PITCH  
 HEATING. STEAM.

FLOORS.  
 FINISH. { OUTSIDE  
 { INSIDE  
 CEILING · HEIGHT.  
 LIGHTING  
 SANITARY · FACILITIES

CEMENT.  
 STUCCO.  
 TILE  
 12'-7 1/2"  
 ELECTRIC.  
 INSIDE TOILETS.

EASTERN DIV.  
 ROLLER SUB  
 STD. No. 239

51A



FLOOR PLAN  
 SCALE 1/32" = 1'-0"

DATE · SEPT. 22 · 23

MAIL AND EXPRESS · BLDG.  
 SPRINGFIELD · MO.